

# OUR KARMANN-MOBIL MOMENT



**CATALOGUE**  
2020 | 2021

**KARMANN**  
 *Mobil*



Customized or as-is,  
how ever  you want it?

**Recreational vehicles are freedom, an everyday vehicle and a retreat all in one. It is therefore all the more important to find the right one.**

Find out which motorhome you want to discover the world in and which bed you want to dream about it in. Our vehicles offer holiday fun in all sizes. In various lengths. And in countless variations. This rather factual presentation provides an initial overview. The emotional side is yet to come. Just turn the page.

**NEW!**  
CAMPER VANS  
WITH A POP-UP ROOF

## MODELS AND EQUIPMENT LINES

**DAVIS VIEW**  
Motorhomes  
with a pop-up roof.

**DAVIS**  
Motorhomes from convenient to luxurious.

**DEXTER**  
Motorhomes for short trips and long journeys.

**DEXTER-MODELLE  
MIT HUBBETT**

Motorhomes with plenty of space and plenty of bed.

From Page 46/47

## MODELS WITH DOUBLE BEDS

5 m

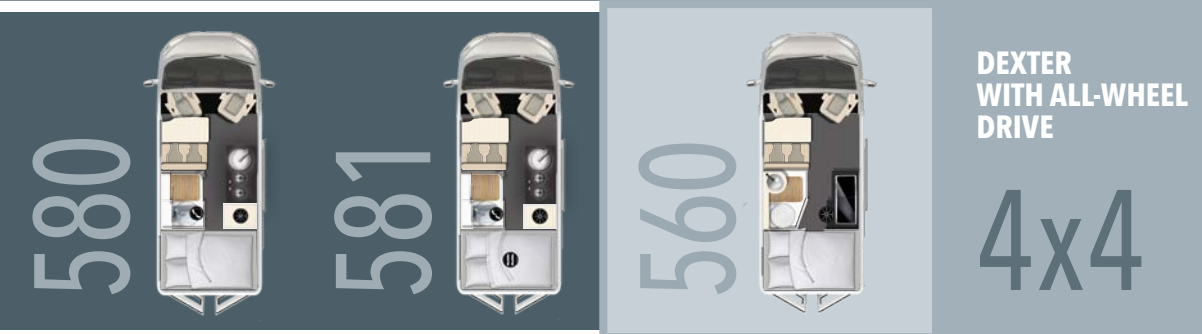
Vehicle length up to 5.50 m



From Page 24/25

Vehicle length up to 6 m

Vehicle length up to 6.50 m



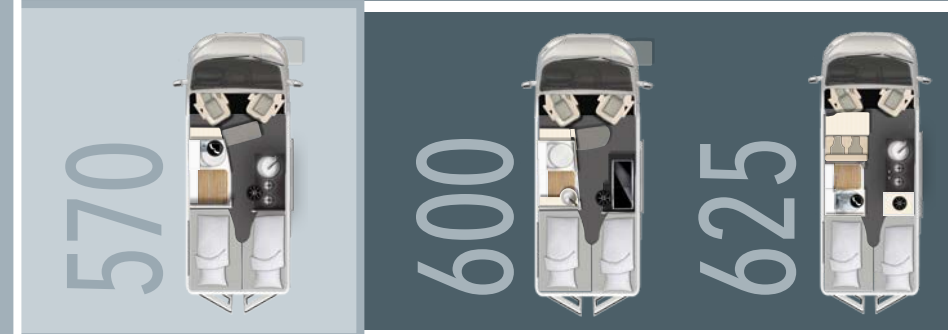
MODELS WITH SINGLE BEDS

5.50 m

Vehicle length up to 6 m

From Page 38/39

Vehicle length up to 6.50 m





# Greetings from the south!

**No matter how nice the holiday, how relaxing the time  
or how impressive the landscape...**

It is the wonderful individual moments that remain in our memories and of which we tell for years to come. With a great motorhome, you can experience many such moments. The following images are from a short holiday in Sicily. Of course you can experience the same level of enjoyment somewhere else. Give it a try.

SICILY

GPS:

37° 38' 15.835" N  
13° 55' 52.036" E



LATITUDE: 37.637732

LONGITUDE: 13.931121

TEMPERATURE:

24.6 DEGREES CELSIUS

SUN: 10 HOURS A DAY



WIND SPEED: LOW



ENJOYMENT LEVEL: HIGH





**Pretty steep.** But everything is fine,  
as we have four-wheel drive.



TUESDAY,  
ON THE WAY TO  
CORLEONE



**SICILY**

04/05

FRIDAY,  
NEAR CEFALU



**Still waters.**

Just me and the sea.  
Pure relaxation.



**Night camp.** Absolute silence  
apart from the crackling of the fire.



ON TOWARD ETNA





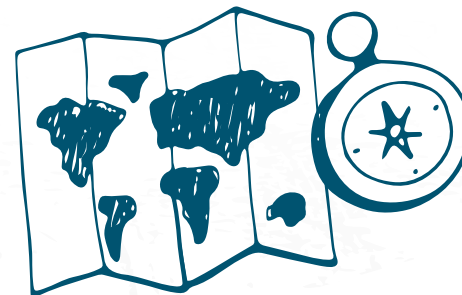
2nd week.  
Time for  adrenaline!  
Biking on Etna ...





**Well underway.**

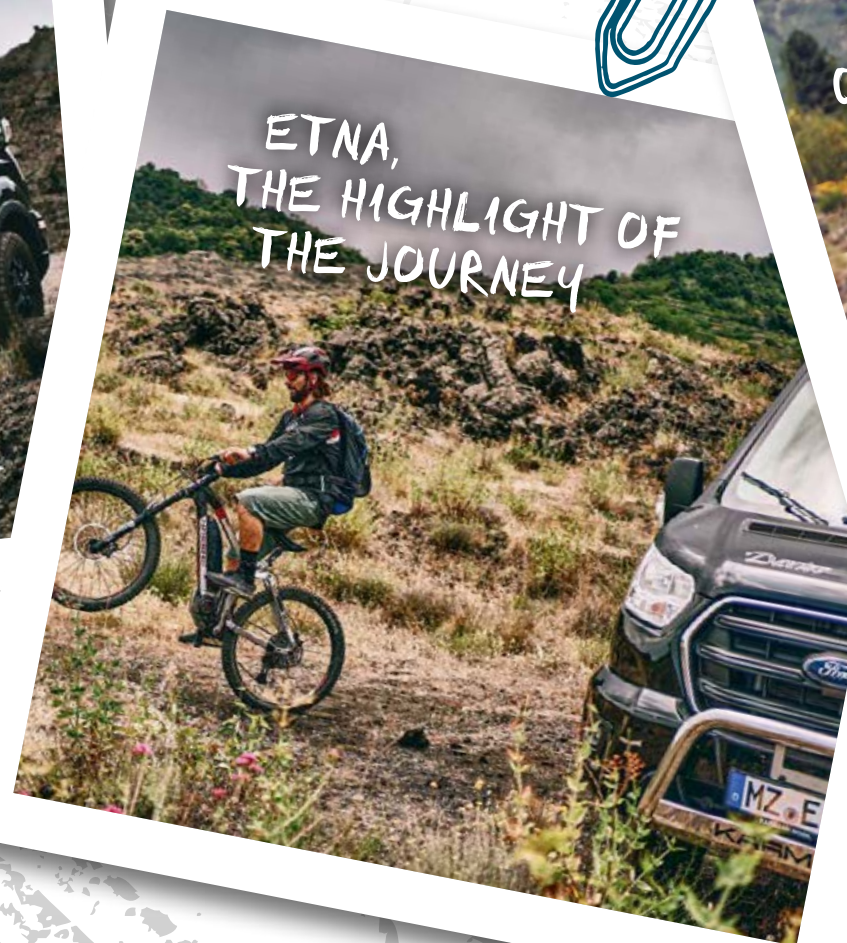
Our equipment is safely stowed away.

**Up high.**

We are ready for Etna and the adrenaline levels are rising.



CATANIA,  
THE TENSION RISES



ETNA,  
THE HIGHLIGHT OF  
THE JOURNEY



WEDNESDAY, HOMEWARD  
ON THE A1 MOTORWAY

DOLCE VITA FOR  
ADVENTURERS

**Goodbye.** We're already excited about the next trip. Other countries have beautiful mountains, too...



# What kind of vacation would you like?

With your Karmann-Mobil, you can take a new direction every day. But which model fits best?

## DEXTER

Motorhomes full of character for short trips and long journeys.

From page 28/29



## DAVIS

Stylish motorhomes from comfortable to luxurious.

From page 30/31



## DEXTER 4x4

All-wheel drive outside, all-inclusive inside.

From page 18/19



## DEXTER WITH A LIFT BED

Plenty of room, even upstairs.

From page 46/47



Flooded with light.  
It feels like you are outside.  
And you can be if you want.



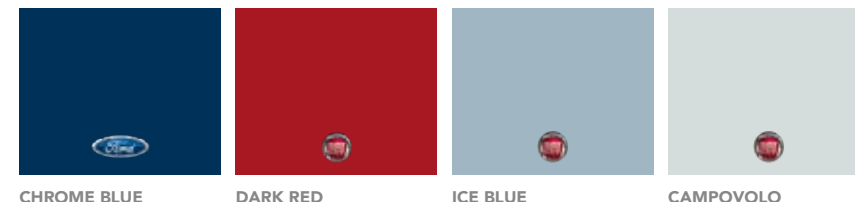
**NEW!**  
CAMPER VANS WITH  
A POP-UP ROOF

**It's not so easy considering Karmann-Mobil's numerous models, versions and optional features.**

These questions can help you find the answer. Do you want to travel with the utmost comfort? Or would you prefer extremely stylish? Do you need a whole lot of space or just a good bit? Do you want to make rapid progress on the road or take to rougher slopes? Would you prefer a double bed or two single beds? Does a Dexter or a Davis suit you better? And if so, which model? A few important decisions would still have to be made on the way to your very individual leisure-time enjoyment.

Beautiful in  
many colours

**You alone decide where the journey leads. Of course this also applies to the choice of colours.**



CHROME BLUE

DARK RED

ICE BLUE

CAMPOVOLO



CHAMPAGNER

SILVER

IRON GREY

WHITE

BLACK

### DAVIS VIEW

Motorhomes with a pop-up roof.  
A loft bed including a view and  
lots of fresh air.

From page 12/13





When will  
We're





# we get there? already here!

**We didn't know this place until just now. Now we never want to leave again.  
Or is it even nicer somewhere else?**

Can a place be more idyllic or soothing or further away from everyday life? Here, between mountains and valleys, your pulse calms faster than you can say "yoga". In places like these, pure relaxation is in the

air and with every breath you can feel that you are in a special place. There are many beautiful spots like these. And there's hardly a better way to get to know them, than with a Karmann-Mobil motorhome.





# A breath of fresh air for your holiday planning

Pure camping enjoyment without sacrificing comfort is what you can expect when travelling with the **Davis View**. The compact camper combines a lot of features under a single roof. And that is a real highlight in itself. Just raise it for plenty of fresh air and an unobstructed view of the sky.

You'll probably see the big constellation as well. The **Davis View** is actually not all that big, but extremely spacious. And if even more space is needed, the vehicle can be extended by a whole floor. A huge win, especially at night. After all the extra height also makes space for two new wonderful sleeping spots.

This extra space is provided by a pop-up roof that can be raised in just a few easy steps, thus giving you a completely new, noticeably more airy feeling of space. The **Davis View** adds a breath of fresh air to your holiday. Would you like to bet on it?

Two rooms with a kitchen and bathroom.  
What would rent cost elsewhere?




Versatility is its middle name.  
View is its first.





- 1 Folding bedroom.**  
Additional double bed up top
- 2 Freckles included.**  
A sturdy ladder for an easy ascent
- 3 For those whol like to sleep crosswise.**  
Comfortable rear bed for two
- 4 Living on the top floor.**  
An additional double bed up top expands the possibilities



- 
- 1 | Dinner is served.**  
Space for four people
  - 2 | Enjoy your meal.**  
The kitchen invites you to cook
  - 3 | Soft and robust.**  
This upholstery is both
  - 4 | Make space!**  
A spacious and convenient bathroom



# Flexible Up to the roof. And beyond

The **Davis View** has everything you need for a great holiday. And many things to enjoy as part of your everyday life as well. In short: practically anything is possible with this camper. Take road trips or shopping trips. Take a deep breath and experience breathtaking sites.

What do you do when anything is possible? Anything you want. The **Davis View** is exactly the right vehicle for this. It provides a real outdoor feeling and also has a lot to offer indoors including a full kitchenette, air conditioning or a practical folding sofa, for example. Eat comfortably at the table, then have a nice nap. Good vibes up to the roof — it's amazing what you can do with a width of only 2.05 m.

The decisive factor with the **Davis View** is its height. It creates additional space and thus opens up new possibilities. By the way, with an interior height of 1.89 m you can always stand upright in it. This is an invaluable advantage, especially when cooking, brushing your teeth or doing your morning exercises. The new **Davis View** — extremely practical, terrifically versatile and even height adjustable.

*That's a lot of features.  
And still so much room for fun.*



*Great for everyday chores,  
but even better for holidays.*









# Fixed itineraries? We would rather find our own way

**The plan for your tour? Not having the plan. Just take off, follow your curiosity and take in new impressions.**

Why should you commit to just one place when there are so many beautiful places? Why decide months in advance where you want to be months later? And why be guided by travel brochures when your own longing is clearly better advisor? Well, why actually? The world has so much to offer — time to take a discovery tour.



# Limits? What's that?

**The real adventure begins where the roads turn into paths.**

The rocky routes often lead to the most wonderful places. Sometimes they are not even asphalted and in bad weather often hardly accessible with an ordinary motorhome. A simple task for the **Dexter 560 4x4** and the **Dexter 570 4x4**. With its indestructible all-wheel drive, it guides you safely through difficult terrain and opens up many new ways to enjoy your holiday. Thanks to a towing capacity of up to 2.8 tonnes, you can also take heavier sports trailers with you on your journey.

The generously proportioned beds are a real treat. The single beds can reach a length of up to 1.97 m when placed lengthwise. Placing them across the rear of the vehicle creates a magnificent sunbathing area. You can therefore even take a different direction at night. In the light of the moon passing through the Dexter's big side window. Rest up and be able to move mountains the next day. Or climb them. As you like.



*Elegant shell, striking core – the allroad Dexter from the inside.*



*Always find a way. Even when it comes to creating space.*







- 1 Superior on the inside, too.**  
Everything is in its place here
- 2 Adventure from the front.**  
The attractive Dexter front section
- 3 Practically solved.**  
Folding bed for more space
- 4 Comfortable.**  
Bedroom with lots of storage space





- 1 The interior.**  
Beautiful and practical
- 2 It fits in there.**  
Cabinet for clothes and more
- 3 Enjoy your meal.**  
All that's missing here are the ingredients
- 4 Comfort is a must.**  
Freshen up for the next adventure



# Unique like your holiday

Fully responsive on gravel, snow or ice, alert on the road, wonderfully idiosyncratic in its features – the **Dexter 560 4x4** is full of talent.

All-wheel drive, slippery, gravel. Do you associate these words with comfort and upscale features? Probably not, but you could. After all, the **Dexter 560 4x4** combines the best of both worlds in the most individual way.

A cosy 5-seater seating group, an 80-litre refrigerator, a toilet with shower and mountain of comfort await you in just under 6 metres length. With this equipment and all-wheel drive, you can go anywhere comfortably. At any time of the year. Thanks to efficient insulation and powerful diesel heating, the **Dexter 560 4x4** is also an ideal base camp in winter. Before you continue your journey far from the beaten path.

## Special highlights:

- ⊗ EcoBlue engines up to 170 HP
- ⊗ Strong all-wheel drive
- ⊗ Powerful Combi 6 diesel heater
- ⊗ Versatile storage options
- ⊗ Attractive price-performance ratio
- ⊗ Trailer load of up to 2.8 tonnes



*All-wheel drive outside, all-inclusive inside. That's just how Dexter rolls.*



# Anyone can take the road

With the Dexter 570 4x4, you don't necessarily have to drive through gravel, mud and rough terrain. You don't have to go on holiday in the deepest winter either. But you can if you want. Enjoy every meter of road and the freedom to get off the beaten path.

With your four-wheel drive Dexter, even rougher roads are easy to master. With its sequential four-wheel drive, it is ready for every adventure. It can get uncomfortable outside, while remaining cosy within. The smart layout ensures plenty of space.

The furnishings are correspondingly lavish. With a fully equipped kitchen, wash-room with a shower and a toilet, comfortable single beds, a modular seating area and a metre-long storage space in the rear, it's easy to feel comfortable in the **Dexter 570 4x4**. Even if it's bitterly cold outside. Thanks to efficient insulation and a powerful heating system, your motorhome will remain cosy all year round. You don't even have to be on holiday. The **Dexter 570 4x4** is also fun to use every day due to its compact dimensions and features.

## Special highlights:

- ⊗ EcoBlue engines up to 170 HP
- ⊗ Strong four-wheel drive
- ⊗ powerful Combi-4 diesel heater
- ⊗ Trailer load of up to 2.8 tonnes
- ⊗ Bar seating group with a table
- ⊗ Modular wardrobe
- ⊗ Versatile storage options

You can make yourself comfortable here.  
Until the next outdoor adventure.

**NEW!**  
**DEXTER 570**  
**4x4**



Every centimetre is put to optimal use.  
And there are so many of them.







- 1 Eat better.**  
Enjoy a different place every day
- 2 Soap opera.**  
Washroom with shower, WC and folding washbasin
- 3 For late risers.**  
Two comfortable 1.97m single beds with storage space
- 4 Plenty of space even in traffic.**  
Clever solutions create space
- 5 Interior view.**  
Beautiful yet practical with a hook-in folding table



## MODELS WITH DOUBLE BEDS





# Sweet dreams at night and a dream in the morning

**That's the beauty of camping:  
The choice is yours!**

You can sleep where you want and even decide how you want to sleep. What will it be for you? What should your night camp look like? Would you like to enjoy lots of space and closeness at the same time? Then we recommend a spacious double bed. This allows you to practically take your bedroom with you on your journeys.

In many of our motorhomes, a folding double bed with a huge storage space is part of the standard equipment. We will be glad to present you the various models and advise you — we don't want the choice to cause you sleepless nights.

*Add comfort – an additional bunk  
bed provides sleeping space for the  
whole family.*



# Signs? We simply follow our curiosity

**Whoever goes where others go will always be where others are. This is not your thing. You like to take a different path and you'll be rewarded for it.**

With wonderful experiences of nature, almost untouched landscapes and idyllic hiking trails. Out here you can let your thoughts run free or just think of nothing at all and listen to the chirping of the birds or the crackling of the branches. Before returning to your gleaming motorhome.







# Wonderful nature outside. Inside too!

**There are motorhomes. And then there are motorhomes that change your whole life. Like the Dexter.**

Your holiday will never be the same with it, because it lets you experience nature in a completely new way. And, by the way, this starts even before you leave. After all, the Dexter boasts a modern interior with a lot of real wood. A distinctive walnut look and light grey surfaces create a lot of striking charm in combination. You can feel this on every centimetre and see it in every detail. The kitchen unit, for example, is wonderfully robust and yet shines with fine chrome fittings. The dreamlike double bed should also be to your liking. It is also positioned transverse to the vehicle, thus providing a lot of extra space on the go – even in the compact, yet comfortable **Dexter 540** and especially in the larger models like the **560** and the **580**, which offer plenty of space to unfurl. You can enjoy this freedom year-round – the robust Dexter is prepared for any weather with its efficient insulation and high-performance heater. How about skiing in the Pyrenees?

### Special highlights:

- ⊗ High-quality furnishings with solid wood elements
- ⊗ Folding double bed
- ⊗ Spacious washroom with swivelling toilet
- ⊗ Large refrigerator and high-quality kitchen unit
- ⊗ Seating group with 4 seatbelts
- ⊗ Bunk beds for Dexter 560 and 581
- ⊗ All-season furnishings including powerful 4 kW heating
- ⊗ Skyroof (except Dexter 560) on request

*Everything included.  
Just not everyday life.*



*Practical and robust  
are always trendy.*





- 1 | Bedroom on tour.**  
Dreamlike, this rear bed
- 2 | Let it shine.**  
The panoramic Skyroof allows a lot of sun in
- 3 | Spacious bathroom.**  
Much more than a privy
- 4 | Lots of wood and even more space.**  
The dining and living area



- 
- 1 **Interior view.**  
Design as far as the eye can see
- 2 **Sitting in style.**  
Beautifully detailed quilting seam look
- 3 **Splendidly furnished.**  
Your motorhome from the inside
- 4 **Bigger window.**  
Decisively more light
- 5 **Comfort bathroom.**  
Comfortably be to yourself



# An eyecatcher on the go

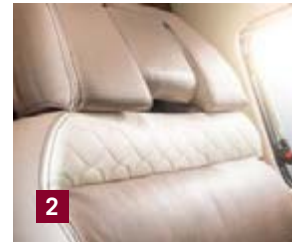
**Of course, a motorhome should above all be reliable, safe and practical. But why shouldn't it also look extremely stylish?**

If you look at the **new Davis**, it is hard to imagine anything other than a beautiful holiday. With its bright interior, high-gloss surfaces and a multitude of elegant furnishing details, the motorhome is a work of art in its own right. But also extremely practical.

After all, the compact **Davis 540** not only provides room for impressive design, but for everything else as well. A bathroom with a shower, a modern kitchen finish, a wide dinette window, a generous double bed, high-quality furnishings, plenty of storage space and yet it still feels spacious. Even in the cab, which offers a remarkable amount of headroom. The best visibility is provided anyway, but not for others looking in. This is due to the new, optional front darkening feature, which provides more privacy and less sunlight. Speaking of the weather, all Davis models can be used all year round thanks to their elaborate insulation and winterproof diesel heating.

## Special highlights:

- ⊗ Engine up to 180 HP
- ⊗ Elegant interior design
- ⊗ High-quality furniture
- ⊗ Atmospheric LED lighting
- ⊗ Powerful diesel heater
- ⊗ Superior bathroom comfort
- ⊗ Lots of space and storage
- ⊗ Folding rear bed



*A little space miracle – the Davis creates space where there is none*



## MODELS WITH DOUBLE BEDS

# Nice place you have here!

**You can never have enough space or enough comfort  
and nobody has ever complained about having too much style.**

In the larger **Davis models 590, 591 and 592**, you can enjoy all these advantages in abundance. And in excess length. About 50 cm more means so much more spaciousness in the large Davis. And you can feel this everywhere: in the spacious windowed bathroom, in the long kitchenette, in the spacious lounge and also at night, when you can spread out wonderfully in your wide double bed.

In the **Davis 591** you also save space when sleeping. A charming bunk bed makes this possible. Also highly noteworthy: the refrigerator in the **Davis 592**, which is almost epic in size at a full 142 litres. So there will certainly be no shortage of cool drinks and fresh food. A Davis of your choice will take care of the rest.

### Special highlights:


- ⊗ Engines up to 180 HP
- ⊗ Impressive interior design
- ⊗ Quality furnishings
- ⊗ Atmospheric LED lighting
- ⊗ Powerful diesel heater
- ⊗ Superior bathroom comfort
- ⊗ Lots of space and storage
- ⊗ Folding rear bed

*Wellness included.  
Your comfort bathroom with daylight.*



*XXL refrigerator.  
Pack in the treats.*



- 
- 1** **Plenty of room.**  
Everything safely stowed away
- 2** **Large bathroom.**  
Close the door and enjoy comfort
- 3** **Interior design.**  
Lots of white, lots of attention to detail
- 4** **Lots of supplies.**  
The 140-litre refrigerator in the Davis 592
- 5** **Two double beds.**  
For families and dreams in the Davis 591



## MODELS WITH DOUBLE BEDS

1

- 1 | Nice and big.**  
Space in abundance
- 2 | Comfortable.**  
A bedroom with lots of storage space
- 3 | Also good as a garage.**  
Park it, take it out, jet off



# Plenty of room for big plans

**Most of the time something is either practical or beautiful. The new Davis 630 is both, and by no small measures.**

There's nothing small about this motorhome anyway. The **new Davis 630** has a lot of space and you can feel it in every centimetre. A pleasant feeling of spaciousness helps you enjoy every journey, a large kitchen unit literally invites you to cook and the washroom with a sliding sink can almost be called a bathroom. It's not surprising that a lot of space is also provided for sleeping comfort. A whole lot!

The comfortable, electrically height-adjustable rear bed makes every night a restful night. Thanks to its huge surface, you can decide every evening anew whether you want to sleep crosswise or lengthwise. At 1.800 litres, the variable loading space so huge that you can take half of your inventory with you. Thanks to the special cargo compartment floor, even heavy things are easy to transport in your mobile home. You can therefore take everything you need for a wonderful holiday. Enjoy it.

## **Special highlights:**

- ⊗ Variable giant storage space in the rear
- ⊗ Electrically height-adjustable rear bed
- ⊗ Cargo compartment floor with loading ramp and lashing eyes
- ⊗ Large rear bed for sleeping lengthwise or crosswise
- ⊗ 1,800 litre cargo compartment
- ⊗ Large kitchen unit
- ⊗ Washroom with movable wash basin

*Is style extremely important to you?  
If so, you've found your match.*



*Vacation on 6 wheels?  
You have plenty of room.*



# It can't be outdone? Oh, yes it can!

If you like the new Davis, you'll like this even more. After all, this elegant motorhome can be furnished with even more stylish and luxurious features. This surprised us, too.

The **Davis Lifestyle Package** actually goes one step further in terms of class and comfort. With furnishings second to none. A white kitchen unit, the additional ambient lighting, fine chrome applications, indirect LED lighting — style fills the whole room and is embellished with cleverly integrated storage compartments.

It really doesn't get any better than this — but sunnier. You can enjoy an unobstructed view of the sky with the **optional Skyroof**. Sun during the day, stars at night and lots of natural lighting inside at all times for an entirely new sense of space. Fancy a holiday on the sunny side?

## Special highlights:

- ⊗ Kitchen unit with white mineral worktop
- ⊗ Ambient lighting on the wall unit and kitchenette
- ⊗ Rear doors with monochrome interior trim
- ⊗ Decorative strips in chrome look on the wall unit
- ⊗ Additional storage cupboards above the rear door



Completely undisturbed.  
Front darkening makes it possible.



Shiny fittings. It is worth paying  
attention to the details here.





- 1** | **Lots of natural light.**  
Thanks to the Skyroof
- 2** | **Design in detail.**  
Wall units with light strips
- 3** | **Cook more beautifully.**  
With atmospheric lighting
- 4** | **A lot safer.**  
Rounded table edges
- 5** | **Interior view.**  
Design as far as the eye can see



# Explore new horizons

**Let yourself drift, enjoy the gentle waves, hang your feet in the cool water and always know that the most pleasant part of the day is yet to come.**

In your very own bed, you can sleep heavenly everywhere. Well rested, you can proceed on the next morning. Which is highly recommended, because there are still so many beautiful places in the world. And so many places to wake up smiling in the morning.









# Dreamlike comfort

**In some places, one wishes that night would never fall.**

In the **Davis 600** or **Davis 620** you will look forward to it every single day. Both models have the nightly luxury of two comfortable single beds. And because almost everything is variable at Karmann-Mobil, you have the choice here too. The beds can be joined to form a cosy double bed with a single action. And the same applies during the day.

Plenty of space and lots of ways to make clever use of it. The best example of this is the comfort bathroom with variable usable space in the **Davis 600**. If this meets your expectations of comfort, then the modern well-lit interior will also match your taste. Provided you like stylish design and an exclusive ambience. We'll just assume you do.

### Special highlights:

- ⊗ Comfortable single beds
- ⊗ Spacious bathroom with variable floorspace
- ⊗ Folding washbasin
- ⊗ Pleasant front darkening
- ⊗ Modular storage boxes at the rear of the Davis 620
- ⊗ Combi 4 diesel heater

*The Davis models are also very big on detail.*



1



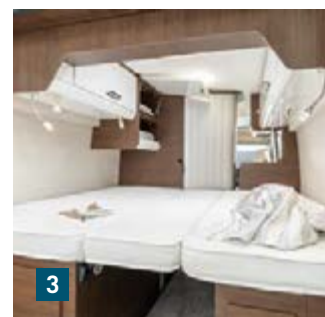
2



4



3



3





- 1** **Finely tuned.**  
Delicious above, space below
- 2** **Wall units with indirect lighting.**  
Wonderful ambience throughout
- 3** **Exactly as you like.**  
Single or double bed
- 4** **Sleek furnishings.**  
Comfort bathroom for high standards in the Davis 600
- 5** **Interior.**  
Reach your destination in style in the Davis 600





- 1 | Comfortable beds.**  
Sleep separately, enjoy together
- 2 | A feast for the eyes.**  
Kitchen unit with ambient lighting
- 3 | Elegant hob with splash guard.**  
Enjoy à la carte
- 4 | The interior.**  
Luxury fills the space
- 5 | Luxurious bathroom with integrated shower.**  
Wellness on the go



# The deluxe way to count sheep

In the heart of nature, yet surrounded by lifestyle and luxury — if this is how you imagine your holiday, then this is how you should imagine your motorhome.

The new **620 XL version** of the **Davis** leaves nothing to be desired. Especially not when it comes to the first-class features. Would you like to enjoy a quiet night after a busy day? Comfortable single beds cordially invite you to do just that. Would you like to prepare a delicious dinner? If so, then the large kitchen unit will match your taste. Would you not want to do without an appealing ambience anywhere? Thanks to the elegant furnishings, you always have it with you. Do you like it especially stylish? The optional **Davis lifestyle package** offers plenty of style and travel enjoyment on top.

With chic chrome-finished furniture surfaces, wall covering in leather look, discreet LED lighting and pretty ceiling lights. The absolute highlight is the optional Skyroof above the driver's cab. The holiday has a few more stars and the sun is always present. Enough reason to shine? Sure, but the Davis offers so many more.

## Special highlights:

- ⊗ Extremely spacious
- ⊗ Large kitchen with 80-l refrigerator (70 l in Davis 600)
- ⊗ Variable storage space in the rear
- ⊗ Bathroom with sliding washbasin



2



3

*Glamorous  
or functional?  
The Davis can  
provide both.*



4



5



## MODELS WITH SINGLE BEDS

1

- 1 | The interior.**  
Plenty of space for holiday enjoyment
- 2 | Skyroof. (optional)**  
A great view
- 3 | Complete kitchenette.**  
Enjoyment knows no bounds
- 4 | Additional storage space.**  
Large luggage right under the bed
- 5 | Single or double bed?**  
You can still decide after brushing your teeth



# Carved from a different wood

The Dexter has a very special character, but provides the same thing in the end: independence of the most relaxed kind.

In the Dexter models with single beds, you can enjoy the comfort of your own sleeping space. Those who would like to get a good night's sleep, will feel right at home here. And those who want to experience an exciting day afterwards can have that, too.

The **Dexter 600** is almost 6 metres long and has everything you need for your personal adventure after breakfast: a great comfort bathroom, a clever folding table, a bar seating group with display cabinet, a two-burner cooker, various storage spaces, robust furniture with a lot of solid wood. All that is missing is the route. And that's where you come in. Would you like to travel as far as possible, take as much as possible with you or have a lot of space? If so, then the **Dexter 625** is your motorhome. Large kitchen? 109-litre refrigerator? A more than spacious bathroom? Two single beds? Spacious wardrobe? Seating for four? More than enough storage space? It's all there in the **Dexter 625** and yet the space always a light airy feel. Perfect for long rides and big plans.

## Special highlights:

- ⊗ Spacious design
- ⊗ Single beds can also be used as double beds
- ⊗ Comfort bathroom
- ⊗ 4 kW winter heating system
- ⊗ Bar seating (Dexter 600 only)
- ⊗ Solid high-quality kitchen unit
- ⊗ Skyroof (optional)



The big Dexters have a lot to offer. Here's just a tiny excerpt from the Dexter 625.



## MODELS WITH LIFT BED





# Up and away

**Sometimes it really doesn't take much to be happy.  
A weekend holiday and a cosy spot, for example.**

Okay, a little sun would be nice too. And a fresh breeze, if it can be arranged. Oh, and most importantly, silence. But otherwise please don't bother. Anything else would just serve as a distraction from what matters. From the salty sea air, the gentle rocking of the waves and the ships passing slowly on the horizon. This is the perfect place to enjoy the harmony of the moment. And to think about where you want to spend a nice day tomorrow. But first, you can look forward to the night — the perfect sleeping place is waiting. A lift bed with a wonderful motorhome around it.

*Into the wilderness,  
into the water – or what else  
do you have in mind?*





## MODELS WITH LIFT BED

# For the very well rested

**Heavenly, like a lift bed. It takes up space only when you really need it.**

The rest of the time, you have more storage space or more free space – as you like. And this is how our Dexter models are equipped otherwise as well: highly customised. The compact **Dexter 550** leaves nothing to be desired with its naturally beautiful furniture with solid wood elements, while offering an unbelievable amount of comfort. Is it bigger on the inside than on the outside? If you take a look at the spacious four-seat group with a sofa bed, the large corner kitchen and the convenient bathroom, you could almost think it's true. Especially as the other features are very extensive.

The **Dexter 550** is a little space miracle and this is mainly due to the retractable lift bed, which makes your Dexter virtually two-storey. You can therefore relax upstairs, while someone else reads a book in the comfortable seating group below. Or maybe a travel guide?

### Special highlights:

- ⊗ Only 5.42 m long
- ⊗ Electronically controlled lift bed
- ⊗ Fully insulated GRP rooftop
- ⊗ Spacious corner kitchen
- ⊗ Large rear washroom
- ⊗ Practical sofa bed



Enjoy your freedom along the way? Here you go.



Space to the power of two.  
Weren't there just seats here?





- 1** | **Large corner kitchen.**  
What a tasty holiday
- 2** | **4 seats with seatbelts.**  
Perfect for when friends come along
- 3** | **Comfort bathroom with shower.**  
Space for your needs
- 4** | **Practical sofa bed.**  
More sleeping comfort
- 5** | **Nice big lift bed.**  
For a sophisticated sleeping experience



- 
- A wide-angle photograph of a motorhome's interior. On the left is a kitchenette with a sink, a wooden countertop, and a pull-out refrigerator. In the center is a long, narrow dining table with a light wood top and a white edge, flanked by two high-backed, beige upholstered seats. A magazine lies on the seat to the left. On the right is another high-backed, beige upholstered seat. Large windows on the right side offer a view of a coastal landscape with mountains and a bay. The ceiling is white with recessed lighting. The overall design is modern and functional, with a focus on natural materials like wood and comfortable seating.
- 1 Really authentic.**  
Lots of wood, lots of natural charm
  - 2 A lot of kitchen.**  
With a lot of working space
  - 3 Cool solution.**  
Comfortably pull-out refrigerator
  - 4 In the best of order.**  
Wardrobe with clothes rack
  - 5 Pure pleasure.**  
Bathroom with lots of space and comfort



# Dreams come true. Now!

**You can't book a holiday like the one you can have in a Dexter. You have to experience it. Just pack your bags and start your dream adventure.**

You only have to do without boredom, as the **Dexter 595** has everything else on board. A luxurious bathroom with a separate shower, an electronically controllable lift bed, a high-quality kitchen unit and lots of charm of its own. The **Dexter 595** is just not like other motorhomes. It has a surprising amount of solid wood, radiates natural flair at all times and is even more practical than you would normally expect from a motorhome. The best example of this is its huge cupboard, which really provides room for everything. You can still store food somewhere else. After all, the Dexter also offers a high-volume drawer refrigerator. This is the only place that is cold in the Dexter. It is efficiently insulated, equipped with a powerful heating system and therefore absolutely winterproof. A vehicle for every season – quattro stagioni, as the Italians say.

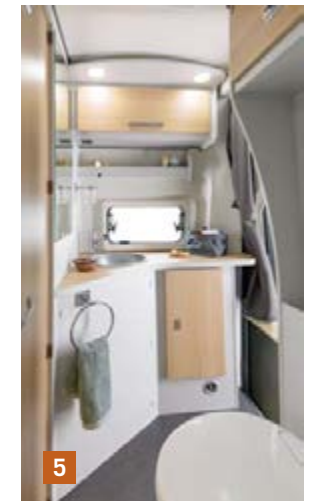
The same applies to the **Dexter 555**, because the family vehicle is hardly any less extensively equipped. With 6 sleeping places, comfortable furnishings with a large lift bed, spacious bathroom and unlimited space, the **Dexter 555** has everything you need on the road with the whole family. Adventure is guaranteed!

## Special highlights:

- ⊗ Electronically controlled lift bed
- ⊗ Sofa bed in the seating group
- ⊗ 2 double beds (Dexter 555 only)
- ⊗ Large kitchen and wardrobe cabinet (Dexter 595 only)
- ⊗ Bathroom with separate shower in the rear (Dexter 595 only)



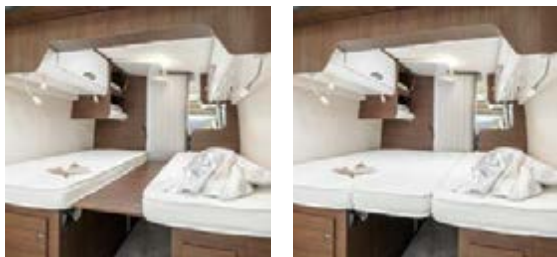
*Big isn't everything, great is also important. The Dexter 595 is both. Good for you.*



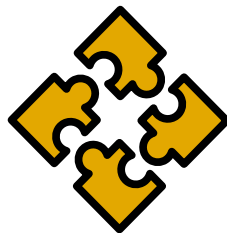


# The KARMANN-MOBIL ADVANTAGES

As an absolute exception, you have no choice in this regard. Because no matter which model or which options you decide on, versatility and practicality in comfortable and high-quality furnishings are always included in Karmann-Mobil's strengths.



*Single bed, double bed, bunk bed or storage?  
It is entirely up to you.*



## **MODULARITY AND VARIABILITY.**

At Karmann-Mobil you will find a selection that leaves nothing to be desired. We offer the right motorhomes for all types of camping and countless opportunities to equip and furnish them fully individually.

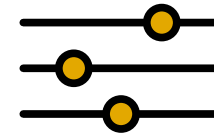
*Features such as the swivelling washbasin and toilette module show how to make the best use of space. Double!*







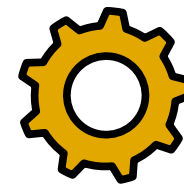
Kitchenette, refrigerator, pantry, closet – at times head-high, at times compact, always spacious. Experience the diversity.



## INDIVIDUALITY.

---

With different vehicles, a wide variety of sizes and lengths as well as various kitchen and bathroom variations, we offer the right thing for every taste and need. Even the beds adapt to individual needs. In some Davis and Dexter models, single beds can be transformed into a double bed or relaxation area in no time. Elsewhere, sinks can be folded away to save space.



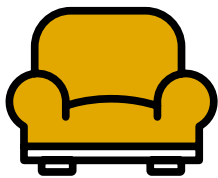
## VERSATILITY.

---

With our motorhomes, you can do much more than just travel. They are also perfect for moving home or for big shopping trips — and all the aspects of everyday life.



## ADVANTAGES AT A GLANCE

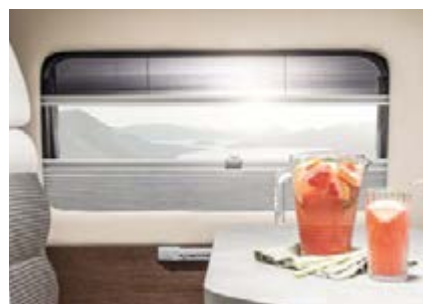


### COMFORT.

We wish you a pleasant journey and make sure you have one. With an interior that offers a multitude of amenities as standard. More than one would expect on the road. You just have to look at the spacious comfort bathroom. Or the generously sized double beds.



*When camping, the journey is the reward.  
Enjoy every kilometre.*



### DESIGN.

Our motorhomes are exceptionally stylish and modern — our contribution to truly wonderful vacation. This claim is implemented brilliantly in every detail — as can be seen in the top cabinet doors with indirect LED lighting.



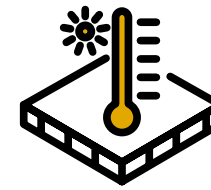


## QUALITY.

Karmann-Mobil stands for durable and reliable motorhomes. This is ensured by selected quality in materials and workmanship. We are convinced of this and that's why we offer a 5-year guarantee against leaks, for example.

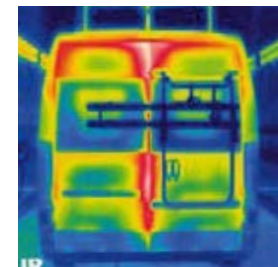
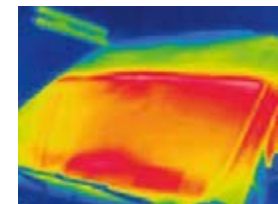


*Winter can come –  
our motorhomes are  
perfectly insulated.*



## ALL-WEATHER.

All our vehicles are suitable for winter use. High-performance heaters, excellent insulation and perfectly insulated tanks, as well as full sealing ensure that our motorhomes are fun year-round. Even in the winter.







All information provided in this brochure refers to the products listed here and does not apply to other products provided by Eura Mobil GmbH. The models pictured in this brochure show the furnishings for the German market. In some cases, they also include special equipment and accessories not included in the standard scope of delivery. All weights are values with a variation of +/- 5 percent. Deviations from the model variants and equipment described here could be possible due to legal regulations in different countries. Please consult your Karmann-Mobil dealer pertaining to the exact scope and the available program of model-specific as well as model-independent equipment. Subject to errors and changes of construction, equipment and special equipment. All previous catalogues lose their validity with publication of this brochure.

© Eura Mobil GmbH 2020 / Reprinting, even in part, requires the express written permission of Eura Mobil GmbH.

As of: August 2020

# CATALOGUE 2020 | 2021

KARMANN-Mobil · Eura Mobil GmbH  
Kreuznacher Straße 78 · 55576 Sprendlingen, Germany  
T +49 6701 203 800 · F +49 6701 203 809  
[www.karmann-mobil.de](http://www.karmann-mobil.de)

